

## R03-30/40

### FEATURES

Automatic tool changer (ATC) R03 is designed for RET10X, RET10P, RET100B horizontal milling and boring machines as an optional technological accessory.

R03 provides changing tools into the machine spindle.

The device is firmly connected to the machine (RET10P) or it is firmly anchored to the floor in the working machine area (RET10X, RET100B).

A tool change is fully automatic. The magazine is filled semiautomatically via the spindle or manually directly into the magazine.



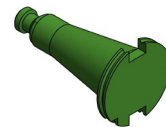
### MAIN PARAMETERS

Version	R03-30*	R03-40	
Tool changing time	15	15	s
Number of tools	30	40	pcs
Tool pocket pitch	130	130	mm
Maximum tool diameter – unrestricted	125	125	mm
Maximum tool diameter – with free pockets	200	200	mm
Maximum tool length	500	480	mm
Maximum tool weight	15	15	kg
Maximum weight of tools in magazine – total	250	300	kg
Maximum tool unbalance in magazine wheel	50	70	kg
Maximum wheel speed	8	5	rpm
Operating air pressure	5	5	bar
Required air purity	40	40	microns
Weight without tools	1240	1380	kg

\* For the machine RET10P is possible only version R03-30

### BRIEF TECHNICAL DESCRIPTION

- two basic parts – magazine and changer
- integrated air adjustment for magazine and changer
- device is partially covered
- all pneumatic components FESTO



## CONTROL

- via the machine control panel in operating mode
- via the second control panel on the ATC in service mode (adjustment and filling)

## MAGAZINE

- stable welded frame
- rotary-mounted light alloy wheel with tool pockets
- wheel rotation drive with integrated gearbox
- steel tool pockets
- tools stored radially, perpendicular to the wheel axis
- tool locking in the pocket by pulling the spring over the collet
- pneumatic release of the tool from the pocket

## CHANGER

- pneumatic clamping jaws opening / closing with locking
- pneumatic extension of the unit with jaws
- rotation of the jaws by an electric motor and a gearbox with a cam mechanism
- pneumatic changer travel in the direction of the tool axis between the magazine and the tool change position
- linear guidance of the above-mentioned changer travel
- motor driven changer travel towards the spindle - guide rail, rack

## CE – VALID ONLY FOR THE EUROPEAN UNION

- ATC is integrated into the safety system of the technological site (machine) according to the applicable legislation and technical standards

## STANDARDLY DELIVERED ACCESSORIES

- accompanying technical documentation including an operating manual (integrated into technical documentation of a machine)