

R04-10

FEATURES

Automatic tool changer (ATC) R04 is designed for RET10X, RET10P, RET100B horizontal milling and boring machines as an optional technological accessory.

R04 provides changing tools into the machine spindle.

The device is firmly installed on a clamping plate (RET10P) or a machine worktable or an additional pick-up table (RET10X, RET100B).

A tool change is fully automatic. The rack is filled semiautomatically via the spindle or manually directly into the rack.



MAIN PARAMETERS

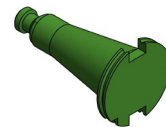
Tool changing time	20	s
Number of tools in one rack	10	pcs
Maximum number of racks	6	pcs
Tool pocket pitch	130	mm
Maximum tool diameter	125	mm
Maximum tool length	500	mm
Maximum tool weight	15	kg
Weight without tools	110	kg

BRIEF TECHNICAL DESCRIPTION

- steel frame rack
- tools are stored horizontally in the rack, without locking, using gravity
- tool handling is provided by the machine spindle
- it is controlled from the main panel of the machine control system
- TS460 workpiece probe, that is a part of RT04, is required to set up the rack
- device is partially covered
- possibility of more racks to set at different places of the machine clamping surface

RACK INSTALLATION

Rack is installed preferably on the edge of the machine working surface so that the machine spindle reaches all positions for storing tools. After clamping, the rack position is determined and written to the machine using a workpiece probe. Then the rack is automatically operated using the TOOL CALL commands + tool number. The machine is equipped with a sensor for checking the presence of the rack, which reads the reflecting surface in the upper part of the rack. If the rack is removed or relocated, the tool change will be blocked.



CE – VALID ONLY FOR THE EUROPEAN UNION

- ATC is integrated into the safety system of the technological site (machine) according to the applicable legislation and technical standards

STANDARDLY DELIVERED ACCESSORIES

- accompanying technical documentation including an operating manual (integrated into technical documentation of a machine)

