

R05-75/100/125

FEATURES

The R05 robotic automatic tool changer is designed as optional technological accessory for the horizontal boring and milling machines RET10X, RET10P and RET100B.

It can be used for changing tools in the machine spindle or in milling heads in horizontal or vertical position.

The tool changing system is not fixed to the machine, but anchored in the ground within the machine's working space.

The tool changing is fully automatic. The filling of the storage rack can be performed semiautomatically using the spindle or manually directly into the storage rack.



BASIC TECHNICAL PARAMETERS

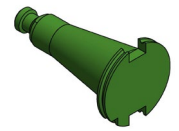
Tool changing time	up to about 30	s
Number of tools	75, 100, 125	pcs
Tool pocket pitch	130	mm
Maximum tool diameter – unrestricted	125	mm
Maximum tool diameter – with free pockets	200	mm
Maximum tool length	500	mm
Maximum tool weight	15	kg
Maximum weight of tools in magazine – total	600, 800, 1000	kg
Operating air pressure	5	bar
Required air purity	40	microns
Weight without tools	???	kg

BASIC TECHNICAL DESCRIPTION

The automatic tool changing system consists of two main modules – a robot with a tool changing head for 2 tools and a tool storage rack.

The Robot is a component produced by renowned companies such as ABB, FANUC or KUKA. The specific robot model depends on the specific application and the machine type and configuration.

The storage rack is a vertical drum containing carousels with tool pockets. The number of carousels depends on the chosen total tool number (3-5 storeys). The height of the individual storeys differs with regard to the



different tool lengths to be expected and can be customized to a certain extend. During machining, the drum is shut. Thus, the tools are protected against swarf and other contaminations.

STANDARD ACCESSORIES

- Accompanying technical documentation including instructions for use (included in the machine's technical documentation)